



ASK – 2500

Mac OS X Printer Driver

Instruction Manual

For Mac OS X 10.5(Leopard)/10.4(Tiger)

**V1.10
April,2010**

Introduction

- You will find the installation steps of ASK-2500 Printer Driver for Mac OS 10.4(Tiger)/10.5 (Leopard), how to use the driver and also other precautions and instruction on this manual.
- Functions and screens of the software may be changed due to upgrading of the software. Depending on the OS version, screens and set up steps may differ from what are described by this manual.
- You are not allowed to copy the entire portion or a part of this manual without obtaining our agreement.
- License Agreement for the Printer Driver

Please read the terms and conditions as below before you install the Printer Driver. If there is any item in the terms and conditions which you cannot agree with, please abort the installation of the Printer Driver.

Terms and Conditions

1. What will be granted by the License Agreement

You will be granted the right to use the Printer Driver, but it does not mean that you have the copy right of the Printer Driver.

2. Prohibition of assignment to a third party

You may not transfer the Printer Driver to a third party and/or have a third party use this Printer Driver.

3. Restriction for copying

You are not allowed to copy the Printer Driver except as needed for a sole purpose of keeping a backup copy.

4. License and Personal Computer (PC)

You may use the Printer Driver only for one PC used by yourself.

5. Use of the Printer Driver outside your home country.

If you bring the Printer Driver outside your home country, please make sure that you follow the laws and regulations of the country where the Printer Driver will be used.

6. Prohibited Acts

Please do not analyze, change or modify the Printer Driver (hereinafter called Prohibited Acts). Fujifilm will not take any responsibility for the problem or failure resulted from the Prohibited Acts. Should the Prohibited Acts cause any loss, Fujifilm will not be held responsible for the loss resulted from the Prohibited Acts.

7. Disclaimer

Fujifilm will not be held responsible for a loss that may have been caused while using the Printer Driver, or a claim made by a third party,

8. Automatic termination of the License Agreement

This License Agreement will automatically terminate if you fail to comply with any of the terms and conditions described as above. You will be required to dispose of the Printer Driver on your own responsibility if the License Agreement is terminated.

Macintosh, MacOS and iPhoto are either registered trademarks of Apple Inc. in the United States and other countries.

Adobe and Photoshop are either registered trademarks of Adobe Systems Incorporated in the United States and other countries.

Index

Introduction	2
Index	3
1. Installation of the Printer Driver	4
2. Registration of the Printer	5
3. How to apply ICC Profile by ColorSync	7
4. Print from application software.....	8
5. Description of Printer Driver features	9
6. How to update the printer driver	12
7. Pop-up functions for error	13
8. Applicable OS	16
9. Recommended PC conditions	16
10. Restrictions	16

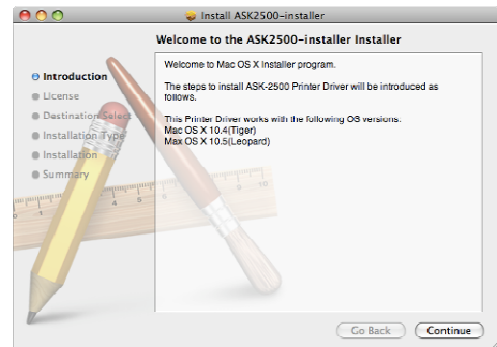
1. Installation of the Printer Driver

Please take following steps to install Printer Driver and to register Printer.

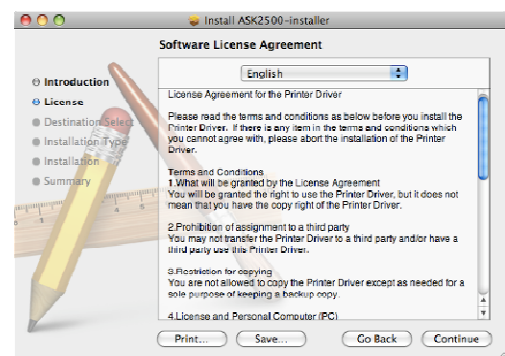
Screen images shown here are for Mac OS X 10.5 Leopard. Screen images may differ for other OS versions.

-
- (1) Decompress [ASK-2500MacDriverV****E.zip].
Please make sure to decompress the file on Mac OS.
Prepare the driver installer of [ASK-2500-Installer_V****] at the PC.(V**** is a version name)
-

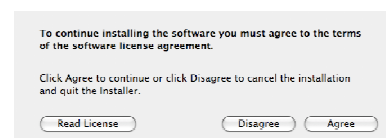
- (2) Double click [ASK-2500-Installer_V****] .
Image shown here will appear on the screen. Click [Continue]



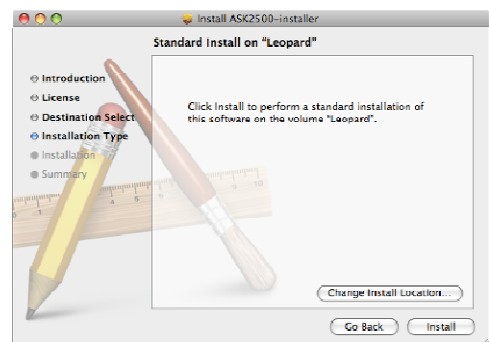
-
- (3) [License Agreement] will be displayed. Read the License Agreement. After reading the License Agreement, click [Continue].



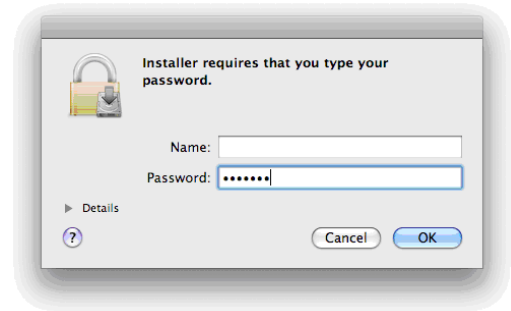
-
- (4) A message asking you if you agree with the terms of the License Agreement will be displayed. Click [Agree].



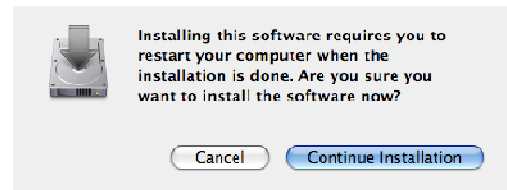
-
- (5) Select where you like the Driver to be installed and then click [Install].



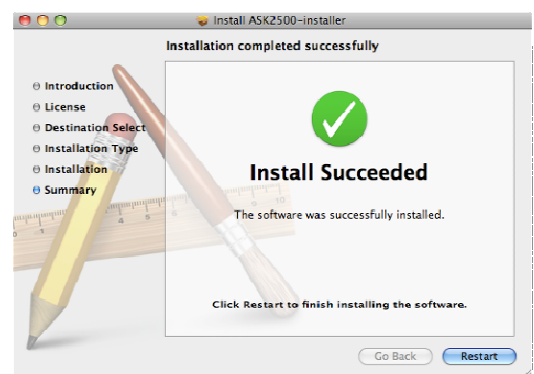
-
- (6) Screen image shown here will be displayed. Enter the name of the administrator and the password. Then, click [OK].



-
- (7) A message will appear asking if you are sure to install the software. Click [Continue Installation].

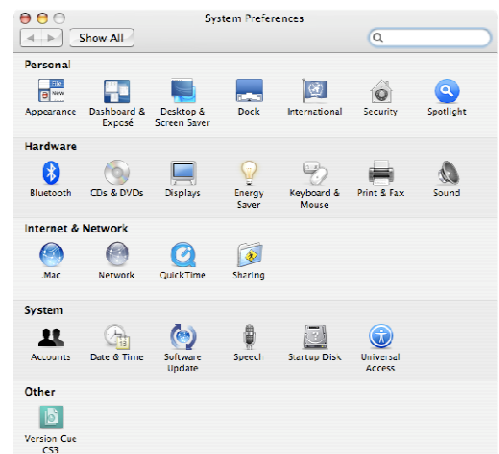


-
- (8) When the installation has succeeded, the screen image shown here will appear. Click [Restart] to reboot the PC.

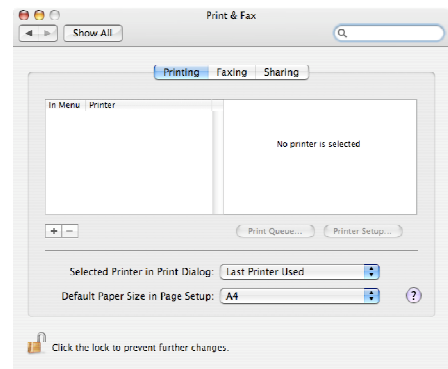


2. Registration of the Printer

-
- (1) Turn on the printer power. Connect PC and the printer by USB cable.
-
- (2) Select [System Preferences] from Apple menu. Screen shown here will appear on the screen. Click [Print & Fax].

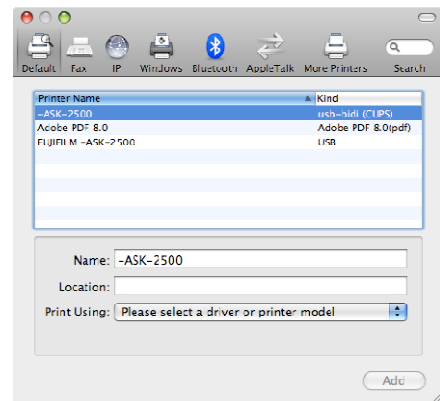


- (3) Click [+] to add Printer.

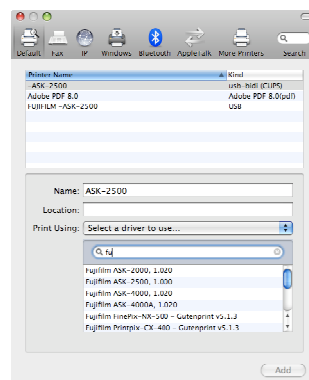


- (4) Printer Browser will appear on the screen. Select [FUJIFILM_ASK-2500] Printer whose connection (Kind) is shown as [usb-bidl].

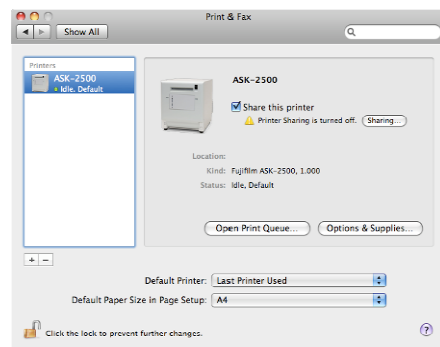
- ※ Do not select the Printer having its connection (Kind) as USB (lower of the two on the example shown here).
- ※ It may take awhile until [usb-bidl] comes on the screen as Connection.



- (5) Click [Select a driver to use...]
Select [Fuji]. Then, select [Fujifilm ASK-2500] then click [Add].



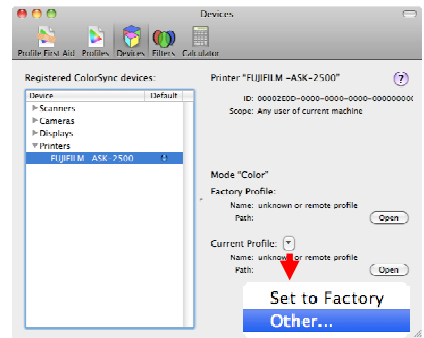
- (6) This should add the Printer.



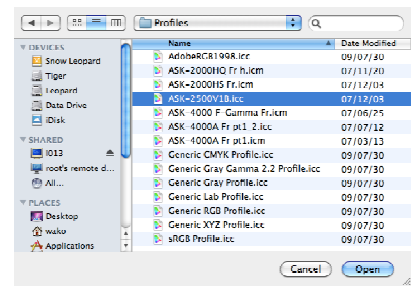
3. How to apply ICC profile by ColorSync

- (1) Set the CD-ROM which contains ICC profile files at the PC.
- (2) Copy ICC profile files stored on the CD-ROM to the first Profiles folder at Mac PC HDD by taking following steps: Library -> ColorSync -> Profiles.
ICC Profile used for ASK-2500
• ASK-2500V1B.icc (ICC profile might be changed without notice)

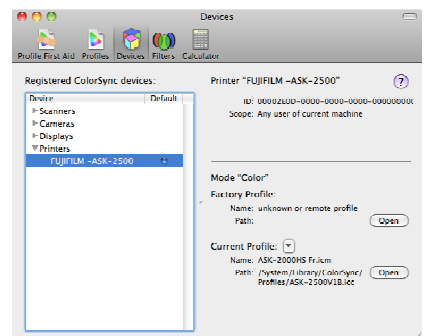
- (3) Select [Application], then, [Utility], and [ColorSync Utility], and [Device].
Select [Printers] and select [ASK-2500].
- (4) Click the button next to [Current Profile] and select [Other...].



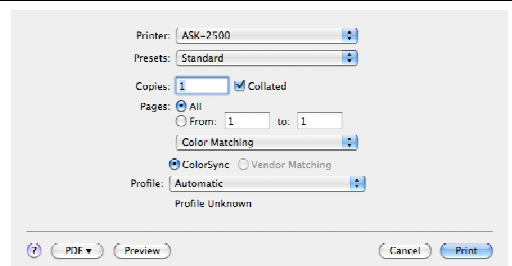
- (5) Select ICC profile [ASK-2500V1B.icc].
* At Mac PC HDD, Library -> ColorSync -> Profiles -> and select [ASK-2500V1B.icc].



- (6) ICC profile will be applied.



- (7) By selecting ASK-2500 as printer at the printer setup of the application software, selected profile will be automatically applied.
For color correction to be made from the application software, please refer to the instruction manual of the application software.

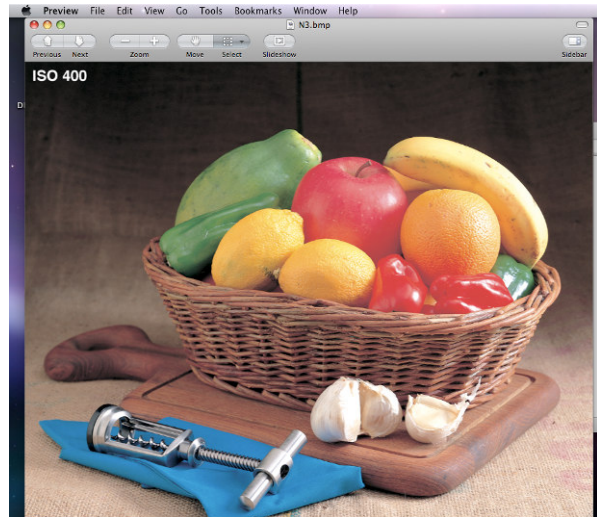


4. Print from application software

This part will describe the steps to print from the application software using the example of widely used application software.

Print steps and screens will differ depending on the application software. For details, please refer to the instruction manual of the application software to be used.

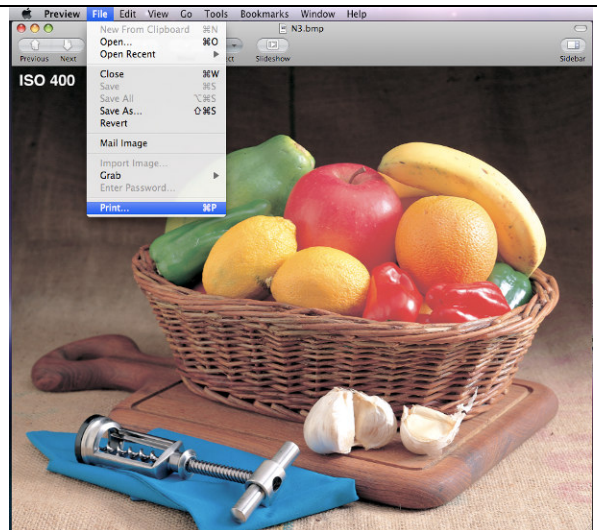
- (1) Start the application software.



- (2) Prepare the image file to be printed.

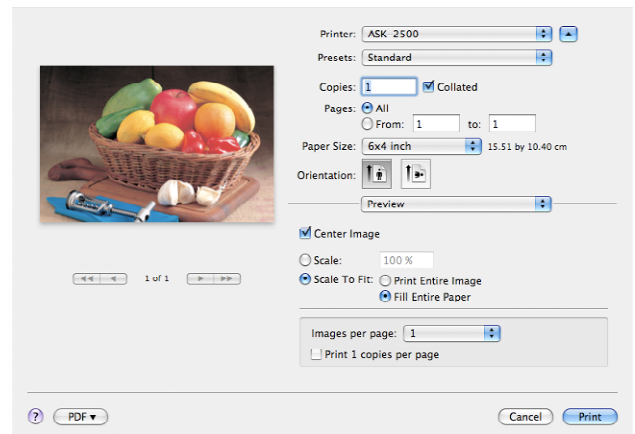
- (3) Call up the print setup menu from the application software.

Select [File] and [Print]

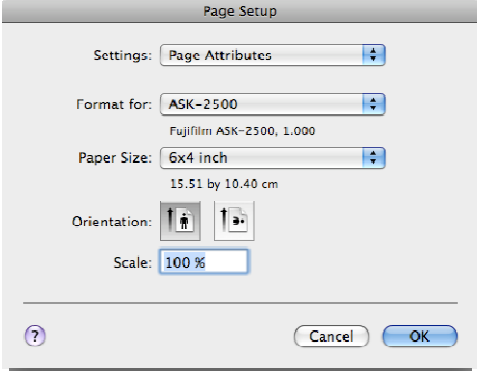
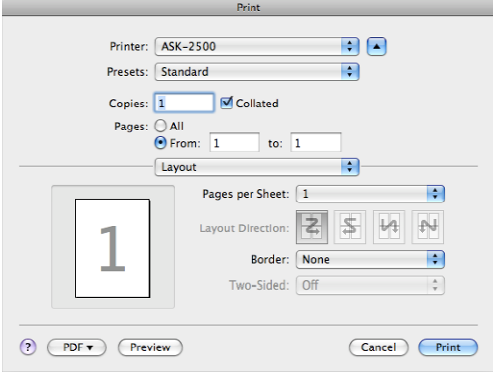
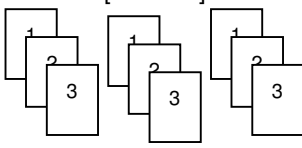
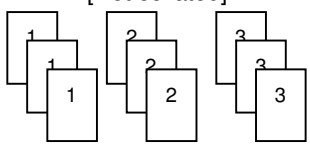
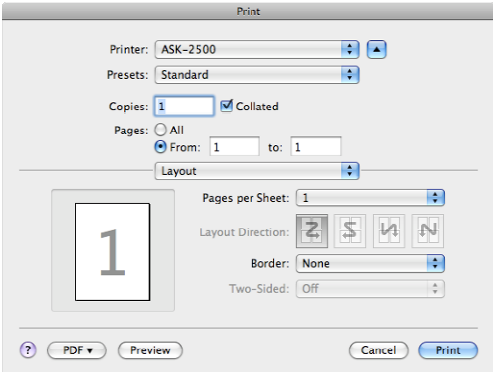


- (4) Make selections such as the print size and click [Print] to proceed with printing.

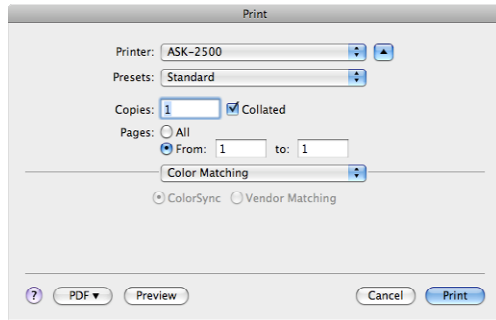
* If printing does not start, please refer to 5 Description of Printer Driver features [Page setup]. And please check if the settings agree with the ink ribbon and paper actually set at the printer.



5. Description of the Printer Driver features

<p>Page setup</p> 	<p>Select print size. It is necessary that the print size set here matches the ink ribbon/paper actually set at the printer.</p> <p>[ASK-2500]</p> <ul style="list-style-type: none"> ✓ 6x4 inch 5x3.5 inch 5x7 inch 6x8 inch 6x9 inch 6x4 inchx2 <p>Other Manage Custom Sizes...</p>
<p>Copies and Page</p> 	<p>[Copies]</p> <p>Set the number of print copies. Recognizable maximum number of copy is 99.</p> <p>[Collated]</p> <p>Specify in what print sequence copies shall be made. When marked on [Collated], prints will be made as collated sequence. Example: 3 copies each of 3 pages are printed</p> <div style="display: flex; justify-content: space-around;"> <div data-bbox="759 999 1094 1189"> <p>[Collated]</p>  </div> <div data-bbox="1142 999 1485 1189"> <p>[Not collated]</p>  </div> </div>
<p>Layout</p> 	<p>Page</p> <p>[All]: All pages will be printed. [From: To:]: Specified range of pages will be printed.</p> <p>[Pages per sheet]</p> <p>Multiple images will be combined into one page. Number of images combined into one page may be selected from 1, 2, 4, 6, 9, or 16.</p> <ul style="list-style-type: none"> ✓ 1 2 4 6 9 16 <p>[Layout Direction]</p> <p>Layout Direction of the combined images are set.</p> <p>[Border]</p> <p>Border lines between combined images may be drawn. Selection among no line, single hairline, single thin line, double hairline and double thin line may be made.</p> <ul style="list-style-type: none"> ✓ None Single Hairline Single Thin Line Double Hairline Double Thin Line <p>[Two-Sided]</p> <p>Two-Sided print is not available.</p>

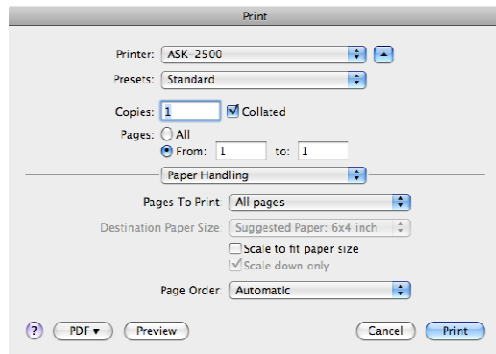
ColorSync



[Color Matching]: Selection cannot be altered.

Please make the color matching by the application software such as Photoshop.

Paper Handling



Pages to Print

[All pages]: All pages will be printed.

[Odd Only]: Odd numbered pages will be printed.

[Even Only]: Even numbered pages will be printed.

✓ All pages

Odd Only
Even Only

Page Order

[Automatic]: Printed in the sequence of the page order.

[Normal]: Same as Automatic.

[Reverse]: Printed in reversed sequence of the page order.

✓ Automatic

Normal
Reverse

Destination Paper Size

[Destination Paper Size]: Print is made on the specified paper size.

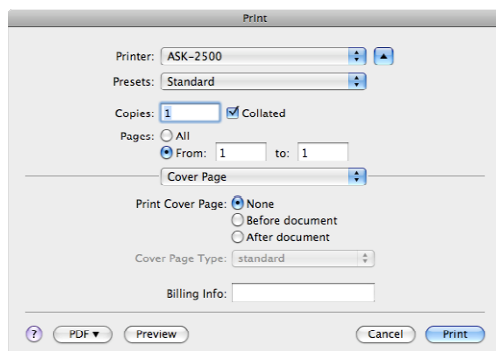
[Scale to fit paper size]: Adjust image to the selected paper size to print.

[Scale down only]: When marked, scale down image if needed to match the paper size to print.

✓ Suggested Paper: 6x4 inch

6x4 inch
5x3.5 inch
5x7 inch
6x8 inch
6x9 inch
6x4 inchx2

Cover Page



Print Cover Page

[None]: Cover Page will not be printed.

[Before document]: Cover Page will be printed first.

[After document]: Cover Page will be printed at the end.

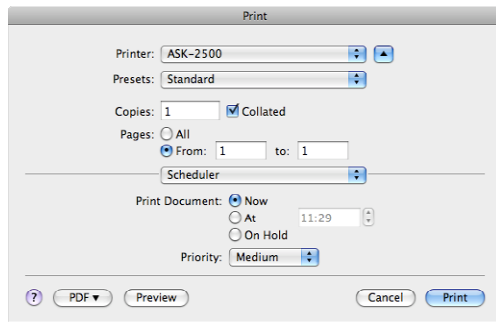
Cover Page Type

Cover Page Type may be selected from among choices shown.

classified
confidential
secret
✓ standard
topsecret
unclassified

Billing Info: Entered billing data will be printed on Cover Page.

Scheduler



Print Document

[Now]: Printing will start immediately.

[At]: Printing will start at the specified time.

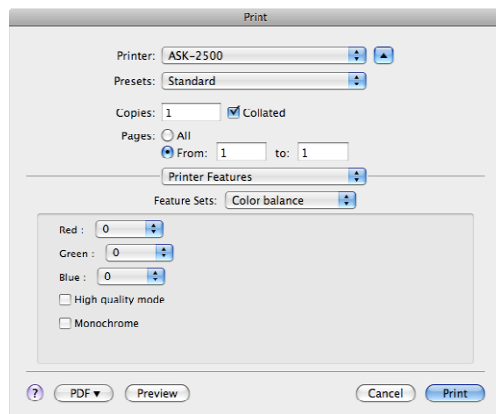
[On Hold]: Printing will be kept on hold (Printing will not start until resumed).

[Priority]

When there are pending print orders, it is possible to alter print priority. Selection among Urgent, High, Medium (default) and Low is possible.

Urgent
High
✓ Medium
Low

Color Balance



Color balance: Alter image color.

[Red] (Cyan): (Cyan) -10 to 0 to +10 (Red)

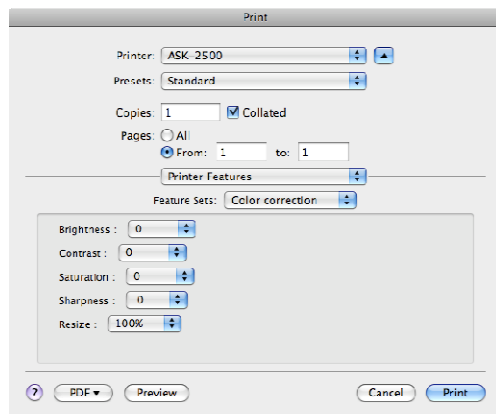
[Green] (Magenta): (Magenta) -10 to 0 to +10 (Green)

[Blue] (Yellow): (Yellow) -10 to 0 to +10 (Blue)

[Monochrome]

When marked, print will be made in black and white.

Color correction



[Brightness]: Alter brightness of the image.

(Dark) -10 to 0 to +10 (Bright)

[Contrast]: Alter contrast of the image.

(Low)-10 to 0 to +10 (High)

[Saturation]: Alter saturation level of the image.

(Low) -10 to 0 to +10 (High)

[Sharpness]: Increase or decrease the sharpness level of the image.

(Decrease) -4 to +4 (Increase)

[Resize]: Enlarge or scale down the image.

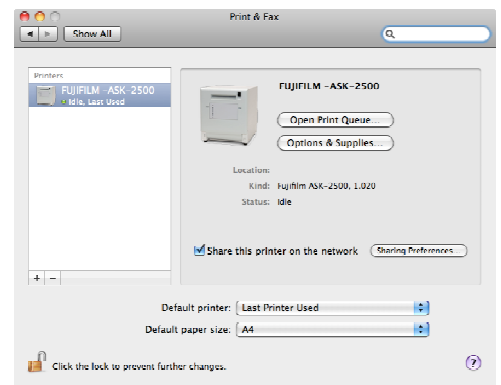
(Reduce) 90% to 100% to 110%(Enlarge)

6. How to update the printer driver

- (1) Install the updated printer driver. Follow the procedure of chapter 1 "Installation of Printer Driver"
- (2) Select [System Preference] from apple menu. Screen image shown here will be displayed. Click [Print & FAX].



- (3) Select ASK-2500 and double click.



- (4) Select [Driver], then [Print Using], and [Select Printer Software].

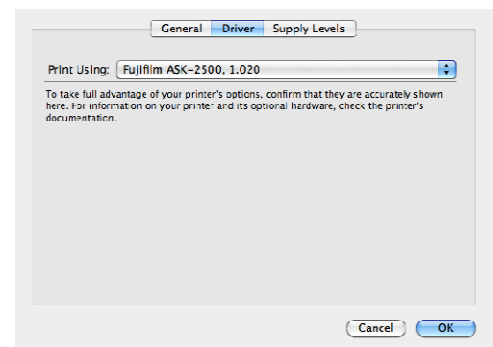
✓ Fujifilm ASK-2500, 1.020

Auto Select

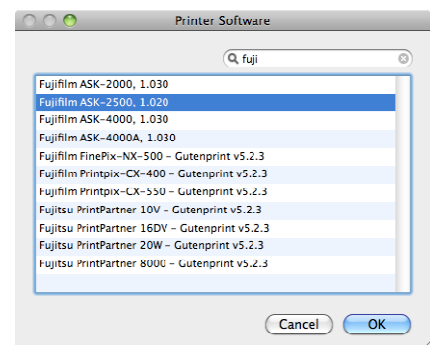
Generic PCL Laser Printer

Select Printer Software...

Other...




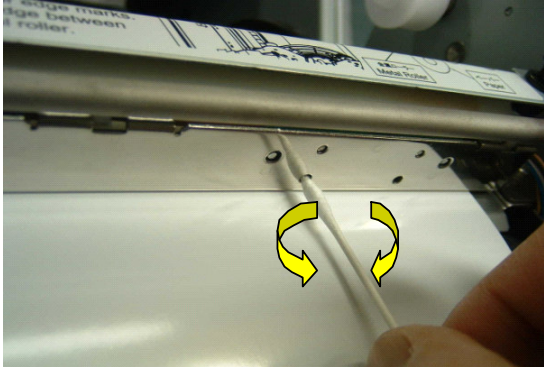
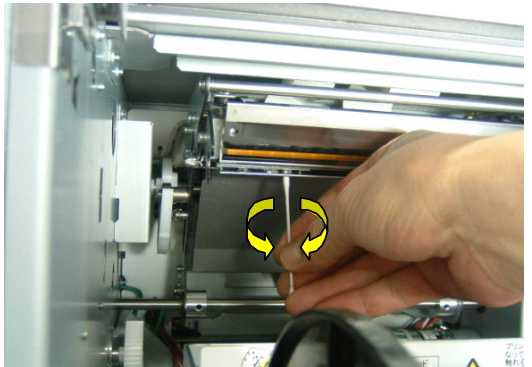
- (5) Select the new driver again.



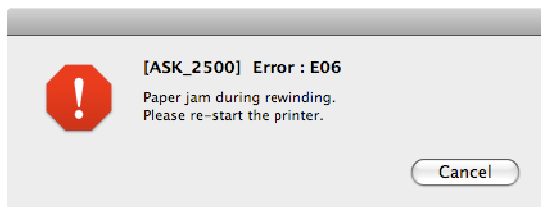
7. Pop-up function for error

Error message

- When an error is caused, a pop-up message shown below will appear on the screen.
- Clicking [Cancel] will cause job to be deleted and Printer will be ordered to stop printing.

No.	Displayed message	Method of recovery
E01	Print Head does not work (up). Please re-start the printer.	* Check the "Entrance Cover" if it is properly attached.  * Please re-start the printer
E02	Print Head does not work (down). Please re-start the printer.	
E03	Failed to feed ribbon. Please check the ribbon and re-start the printer.	* Please check if the ink ribbon is breaking and/or caught in the mechanism, and then follow the instruction "Ribbon Break-down" in the page 41 to re-set the ink ribbon. * Clean the ribbon sensor.
 		
E04	Error in head controller. Please re-start the printer.	* Please re-start a printer.
E05	Failed to feed paper (forward feed). Please check the paper and re-start the printer.	* Refer to the instruction "Paper Feeding Error" in the page 40, and set the paper again. * Check the paper core securely locked. (See Page 26)
E06	Paper jam during rewinding (rewind feed). Please check the paper and re-start the printer.	
E07	Abnormal paper cutting. Please re-start the printer.	* Make sure that paper-slug and/or dust is not put on the cutter.
E08	Internal command error. Please re-start the printer.	* Please re-start the printer.
E09	Error writing in Flush ROM. Please re-start the printer.	* Please re-start the printer

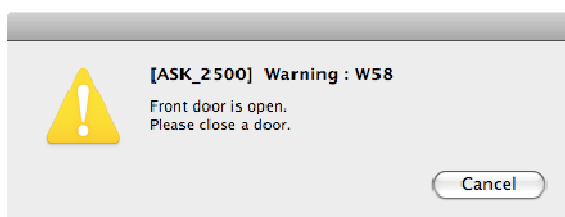
E10	Failure in power supply. Please re-start the printer.	* Please re-start the printer.
E11	Failure in grip roller movement. Please re-start the printer.	* Please re-start the printer.
E12 E13	Please check the room thermistor in the printer. Please re-start the printer.	* Please check the cable to the thermistor securely fastened. * Please re-start the printer.
E14 E15	Please check the print-head thermistor. Please re-start the printer.	* Please check the cables to the thermal head securely fastened. * Please re-start the printer. .
E16	Failed to write in EEPROM. Please re-start the printer.	* Please re-start the printer.



Warning message

- When there is a warning error, an error pop-up message as shown below will appear on the screen.
- Printing will resume when the cause of the error is removed.
- Clicking [Cancel] will delete the print job and Printer will be ordered to stop printing.

No.	Displayed message	Method of recovery
W51	Ink Ribbon run out. Please replace the Ink Ribbon.	* Ink ribbon has run out. Please replace the ink ribbon. * This warning message may also appear occasionally when the dust put onto the ribbon sensors. Please try cleaning of the sensors.
W52	Please place a proper size of paper and ink ribbon. Also, check paper size setting of the printer driver.	* Size of the actual media in the printer is not matching to the print order size. (e.g., 5x7-inch media is set to the printer while the print order is 4x6 format.) * Please set the proper size of media, or check the print order setting.
W53	Front door is open. Please close the door.	* Front door is open. Please close the door.
W54	Ink Ribbon is not set. Please set an ink ribbon.	* The ink ribbon has run out. Please replace the ink ribbon and the paper simultaneously.
W55	Roll paper is empty. Please replace the roll paper.	* The paper has run out. Please replace the paper and the ink ribbon simultaneously.
W56	Paper cannot be fed correctly. Please re-set the roll paper.	* Paper is not set correctly. Please re-set the paper roll, and make sure that the leading edge of the paper is properly inserted.
W57	Please place a proper size of paper and ink ribbon. Also, check paper size setting of the printer driver.	* Same as "W52".
W58	Front door is open. Please close the door.	* Same as "W53"



8. Applicable OS

Mac OS X 10.5 Leopard

- Installation on Mac OS X 10.4 (Tiger) is possible and the Driver will function. However, there are some limitations in the function of the Driver when used with Mac OS X 10.4 (Tiger)
- The Driver does not function with Mac OS X 10.3 (Panther) and earlier versions.

9. Recommended PC conditions

PC: Macintosh PC installed with Intel Processor or PowerPC G5 CPU.

Memory: Minimum 1GB.

HDD: Os must be able to function without a problem.

- When printing is made from application software, PC conditions must also meet the requirement of the application software.
- When PC conditions do not meet the recommended conditions, operation speed may slow down.

10. Restrictions

Please note that there are following known restrictions with the current version Printer Driver.

Items	Contents
When more than one printer of the same model are connected, there is no control to which printer the print job will be ordered next (for example, if two of ASK-2500 are registered, print will be made to either one that is first recognized).	At the moment, it is not possible to control multiple printers of the same model. Please connect only one Printer of the same model. There is no problem to connect one ASK-2500 and one ASK-4000 to the same PC.
After installing the Driver on Mac OS X 10.4, if OS is rebooted and then the Printer is connected, [usb-bidl] will not come up on the screen.	This is a problem with 10.4 (Tiger). It will function correctly if you connect Printer by USB before rebooting. With 10.5 (Leopard), it functions correctly even when Printer is connected after rebooting.
When printing with iPhoto, switching repeatedly between Advanced and Standard will cause a situation that entering Copies/From/to may not be possible.	This is a problem with 10.4 (Tiger). It is possible to enter Copies at main screen. There is no problem with 10.5 (Leopard).
When printing with PhotoShop, Copies may not entered at the Driver menu. Copies may be entered only at the main screen of PhotoShop.	This is a problem with 10.4 (Tiger). It is possible to enter Copies at main screen. There is no problem with 10.5 (Leopard).
If the printer name is changed, the printer name of the error pop-up does not reflect the change. At printing, icon will be displayed but the icon name does not reflect the change in the printer name.	Cue name created when Printer was first registered is referred. Cue name may not be changed after registering the Printer. To change Printer name, it is necessary to re-register Printer.
Japanese letters may be entered for Billing Info. However, printed Japanese letters become deformed.	This comes from OS. Please do not use Japanese letters.
Any number may be entered for Copies.	This comes from OS. Printer will limit the Copies at 99. Maximum number of Copies allowed is 99. (This is the upper limit that the Printer Software is designed to handle).
Any number may be entered for Billing Info.	This comes from OS. Please avoid entering data that is not necessary.